

MAGNUS SERIE LINEAIR LED

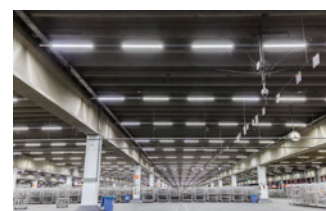
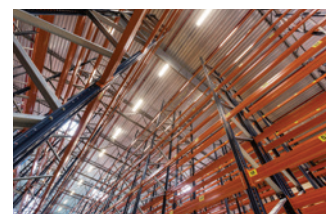
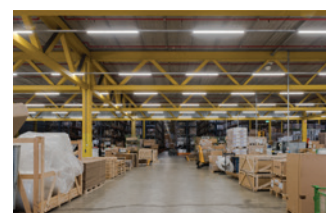
IP20 - IP40 - IP54 - IP65

CE    LM-79 LM-80



With the Veko *Magnus* series, you will enjoy your lighting for years without having to do anything much about it. Suspended neatly and seamlessly, these linear LED luminaires can be seen in every industrial area you can think of. From open, low work floors and production halls to high warehouses and damp areas, Veko has a linear LED solution for each application. Did you know that existing Veko lighting, which may be as old as 40 years, can very easily be converted into the most energy-efficient LED performer on the market? The choice for anything other than *Magnus* could prove to be more expensive...

The *Magnus* series offers you safety and makes your work enjoyable. Its Lumen per Watt ratio is more than excellent, and the *Magnus* luminaires reduce glare and make for an evenly lit floor. This will boost productivity! Moreover, using aluminium ensures optimal temperature management: Veko LED lighting works effortlessly in ambient temperatures of 35 °C. That is why Veko offers a 10 year exchange guarantee: in the event of a fault, the *Magnus* luminaire will be repaired or exchanged free of charge.



Technische gegevens

Length (mm)	619.5 mm (2.03 ft)	1,229.5 mm (4.03 ft)	1,529.5 mm (5.02 ft)
Output flux (lm)	2,965 lm	5,930 lm	9,350 lm
Wattage (W)	23 W	46 W	69W
Voltage (V)	220 – 240 V		
Frequency (Hz)	50 – 60 Hz		
Power factor	>0.90		
Electronics	Philips, Osram, Tridonic		
Operational temperature	-30 °C to +45 °C		
Weight	approx. 3.3 kg per m, including profile and accessories		
Application	Industrial areas		
Installation height	2 - 20 m		
Colour temperature (K)	Natural white (+/- 4,000 K) Upon request, other colour temperature versions are available (3,000 – 6,500 K)		
Colour Rendering Index (CRI)	>80		
Optical options	Wide Beam (WB), Semi-Wide Beam (SWB), Narrow Beam (NB)		
Lens options	Transparent, Diffuse		
Material	Aluminium		
Cover material	Polycarbonate, PMMA		
Impact resistance (IK)	IK02 / IK10		
Colour	Untreated aluminium, anodized, RAL colours		
Options	DALI, CLO, Corridor, Emergency lighting, Colour temperatures, Higher CRI		
Guarantee	288LED + 306LED: L85B10 / 10 year exchange guarantee (or 87,600 hours) / Ta 35 °C 140LED + 240LED: L85B10 / 5 year exchange guarantee (or 43,800 hours) / Ta 35 °C		
Expected life span	In combination with a long life driver, it is possible to reach 100,000 hours		
BREEAM/EIA norms	Yes		

Options

Option	Product code
On/off	F
Dynamic lighting	C
1 – 10 V	D
DALI version	Dd
DALI driver with Constant Light Output (CLO). The average consumption during its economic life is then 62 W (240LED), 35 W (140LED), 52 W (306LED), 47 W (288LED) or 25W (LP096).	DdC
Emergency lighting	N

Versions

MAGNUS IP20 - IP40 - IP54

Optics	Lens	Application	Installation height	Cover
Narrow Beam	Transparent	Open areas	5 – 15 metres	IK02
Semi-Wide Beam	Transparent	Open areas and high racks	6 – 20 metres	IK10
Wide Beam	Transparent	Open areas	2 – 10 metres	IK10
Wide Beam	Diffuse	Open areas	2 – 10 metres	IK10
Wide Beam	Transparent	Open areas	2 – 10 metres	IK02

MAGNUS Waterproof IP65

Optics	Lens	Application	Installation height	Cover
Narrow Beam	Transparent	Open areas	5 – 15 metres	IK02
Semi-Wide Beam	Transparent	Open areas and high racks	6 – 20 metres	IK10
Wide Beam	Transparent	Open areas	2 – 10 metres	IK10
Wide Beam	Diffuse	Open areas	2 – 10 metres	IK10
Wide Beam	Transparent	Open areas	2 – 10 metres	IK02

MAGNUS Low Power IP20

Optics	Lens	Application	Installation height	Cover
-	Transparent, Diffuse	Low areas, order picking racks, car parks	2 – 4 metres	IK02 / IK10
-	Diffuse	Low areas, order picking racks, car parks	2 – 4 metres	IK02 / IK10

MAGNUS SERIE LINEAIR LED

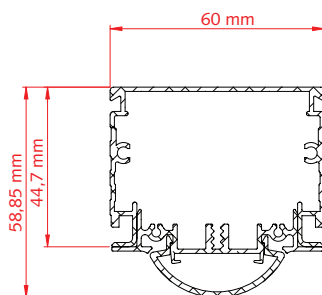
IP20 - IP40 - IP54 - IP65

MAGNUS NB Transparent

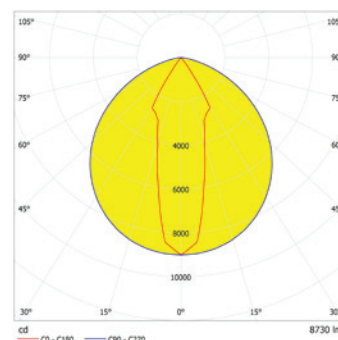
Luminaire



Dimensions



Polar diagram



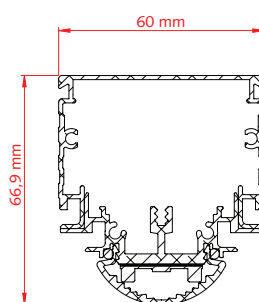
Product code IP20 - IP40	Product code IP54	Wattage (W)	Output flux (lm)	Lumen/Watt
UNN48 DH NW LED	UNH48 DH NW LED	13	1,697	130
UNN80 DH NW LED	UNH80 DH NW LED	23	2,800	129
UNN96 DH NW LED	UNH96 DH NW LED	26	3,393	130
UNN160 DH NW LED	UNH160 DH NW LED	46	5,600	129
UNN140 DH NW LED	UNH140 DH NW LED	40	5,090	127
UNN240 DH NW LED	UNH240 DH NW LED	69	8,730	127
UNN306 DH NW LED	UNH306 DH NW LED	58	8,730	151
UNN288 DH NW LED	UNH288 DH NW LED	52	8,730	168

MAGNUS SWB Transparent

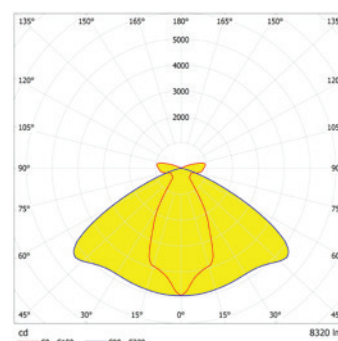
Luminaire



Dimensions



Polar diagram



Product code IP20 - IP40	Product code IP54	Product code IP65 splash-proof	Wattage (W)	Output flux (lm)	Lumen/Watt
UNN48 SBH NW LED	UNH48 SBH NW LED		13	1,617	124
UNN80 SBH NW LED	UNH80 SBH NW LED		23	2,773	121
UNN96 SBH NW LED	UNH96 SBH NW LED		26	3,233	124
UNN160 SBH NW LED	UNH160 SBH NW LED		46	5,547	121
UNN140 SBH NW LED	UNH140 SBH NW LED		40	4,850	121
UNN240 SBH NW LED	UNH240 SBH NW LED	UWW240 SBH NW LED	69	8,320	121
UNN306 SBH NW LED	UNH306 SBH NW LED	UWW306 SBH NW LED	58	8,320	143
UNN288 SBH NW LED	UNH288 SBH NW LED	UWW288 SBH NW LED	52	8,320	160

MAGNUS SERIE LINEAIR LED

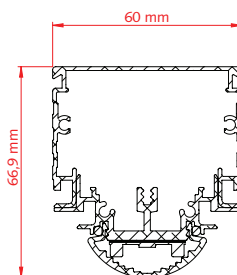
IP20 - IP40 - IP54 - IP65

MAGNUS WB Transparent

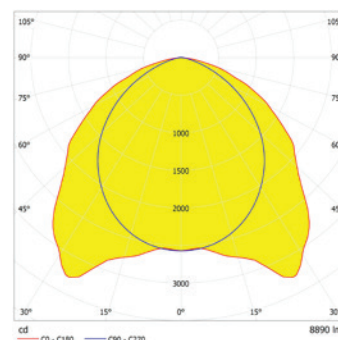
Luminaire



Dimensions



Polar diagram



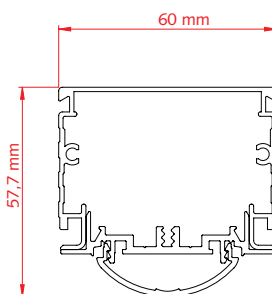
Product code IP20 - IP40	Product code IP54	Wattage (W)	Output flux (lm)	Lumen/Watt
UNN48 BH NW LED	UNH48 BH NW LED	13	1,730	133
UNN80 BH NW LED	UNH80 BH NW LED	23	2,963	129
UNN96 BH NW LED	UNH96 BH NW LED	26	3,460	133
UNN160 BH NW LED	UNH160 BH NW LED	46	5,927	129
UNN140 BH NW LED	UNH140 BH NW LED	40	5,190	130
UNN240 BH NW LED	UNH240 BH NW LED	69	8,890	129
UNN306 BH NW LED	UNH306 BH NW LED	58	8,890	153
UNN288 BH NW LED	UNH288 BH NW LED	52	8,890	171

MAGNUS WB Diffuse

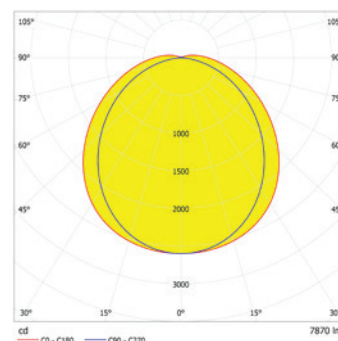
Luminaire



Dimensions



Polar diagram



Productcode IP20 - IP40	Productcode IP54	Productcode IP65 Waterdicht	Vermogen (W)	Output flux (lm)	Lumen/Watt
UNN48 BD NW LED	UNH48 BD NW LED		13	1.530	118
UNN80 BD NW LED	UNH80 BD NW LED		23	2.623	129
UNN96 BD NW LED	UNH96 BD NW LED		26	3.060	118
UNN160 BD NW LED	UNH160 BD NW LED		46	5.247	129
UNN140 BD NW LED	UNH140 BD NW LED	UWW140 D NW LED	40	4.590	115
UNN240 BD NW LED	UNH240 BD NW LED	UWW240 D NW LED	69	7.870	114
UNN306 BD NW LED	UNH306 BD NW LED	UWW306 D NW LED	58	7.870	136
UNN288 BD NW LED	UNH288 BD NW LED	UWW288 D NW LED	52	7.870	151

MAGNUS SERIE LINEAIR LED

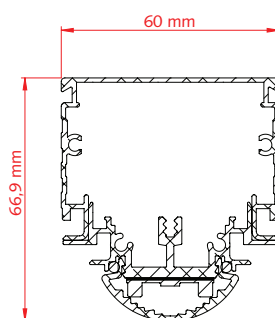
IP20 - IP40 - IP54 - IP65

MAGNUS WB Transparent

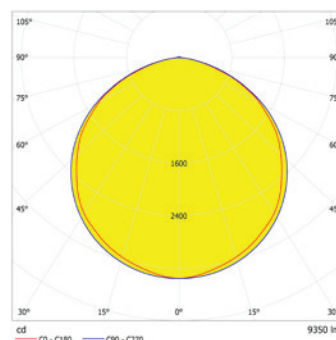
Luminaire



Dimensions



Polar diagram



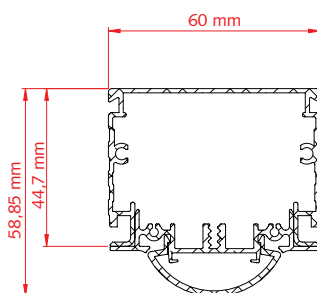
Product code IP20 - IP40	Product code IP54	Product code IP65 splash-proof	Wattage (W)	Output flux (lm)	Lumen/Watt
UNN48 H NW LED	UNH48 H NW LED		13	1,795	138
UNN80 H NW LED	UNH80 H NW LED		23	2,965	129
UNN96 H NW LED	UNH96 H NW LED		26	3,590	138
UNN160 H NW LED	UNH160 H NW LED		46	5,930	129
UNN140 H NW LED	UNH140 H NW LED	UWW140 H NW LED	40	5,390	135
UNN240 H NW LED	UNH240 H NW LED	UWW240 H NW LED	69	9,350	136
UNN306 H NW LED	UNH306 H NW LED	UWW306 H NW LED	58	9,350	160
UNN288 H NW LED	UNH288 H NW LED	UWW288 H NW LED	52	9,350	180

MAGNUS Low Power

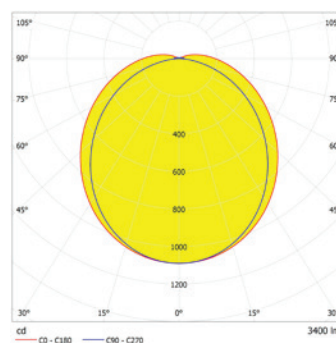
Luminaire



Dimensions



Polar diagram



Product code IP20	Lens	Wattage (W)	Output flux (lm)	Lumen/Watt
UNN096 LED LP BD	Diffuse	27	3,400	130
UNN096 LED LP HD	Transparent, Diffuse	27	3,400	130